

# Sketch Plans

## ASSUMPTION CATHOLIC SECONDARY SCHOOL

September 25, 2018



## Table of Contents

	Page No.
1. School Design Description.....	1
2. Drawings: Site Plan, Floor Plans, Perspectives.....	2
3. Building Program.....	7
4. Preliminary Project Information.....	11

## **1.0 School Design Description**

The proposed addition to Assumption Catholic Secondary School has a Functional Building Capacity (FBC) of 1,041 pupils. The total square footage for the school building is 13,147 square meters (141,513 square feet) and is located on a 2.19 ha (5.43 acres) site in southern Burlington.

Assumption Catholic Secondary School design complies with the Board's academic program while achieving a low ratio of ancillary circulation space to program space. All three (3) stories are fully accessible.

The site and front portion of existing school are reworked to allow fluid movement of pedestrians, vehicles and school buses. An avenue is created leading from Woodward Avenue towards the main entrance. A new student outdoor plaza is created immediately in front of the school with landscaped area and hardscape providing ample seating and informal gathering for students.

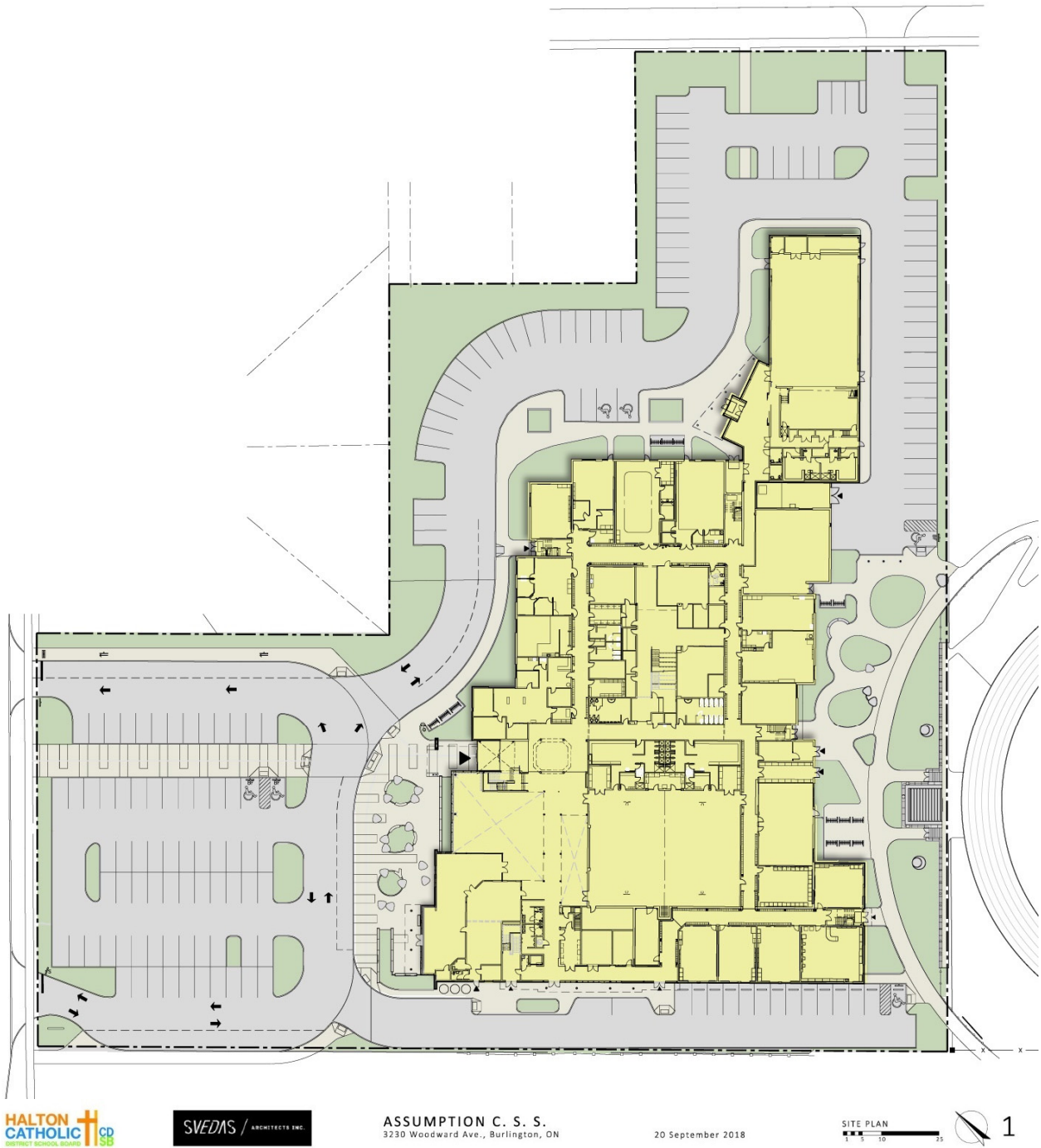
The 1,883 m<sup>2</sup> (20,268 SF) addition is located to the north-west of the existing building. The new entrance is framed by a 2 storey canopy. To the left of the Main Entrance is the refreshed existing office and to the right is the student Hub with new Cafeteria and Served. New support spaces, including washrooms and elevator are located just west of the existing Gymnasium. A new Gallery and Student Teaching/Gathering Stair, Student Success, Classroom and ancillary spaces are located centrally at the heart of the school. A new Exercise Room is provided just south of the existing Gymnasium. The east end of the school has a new corridor linking the school to the 3<sup>rd</sup> Gymnasium/Stage area, as well refreshed Art Classroom, Special Education and Wood Shop Classroom.

The new Resource Room is located on the second floor and overlooks the front exterior student common space to the north and the student Hub on the interior to the East. Ancillary spaces including Washrooms and Elevator are located in close proximity to the new Resource Room. The second floor also has an interior corridor linking the new Resource/Library to the existing classroom addition completed in 2000. A new Hospitality Classroom is located on the Second floor near the Student Teaching/Gathering Stair.

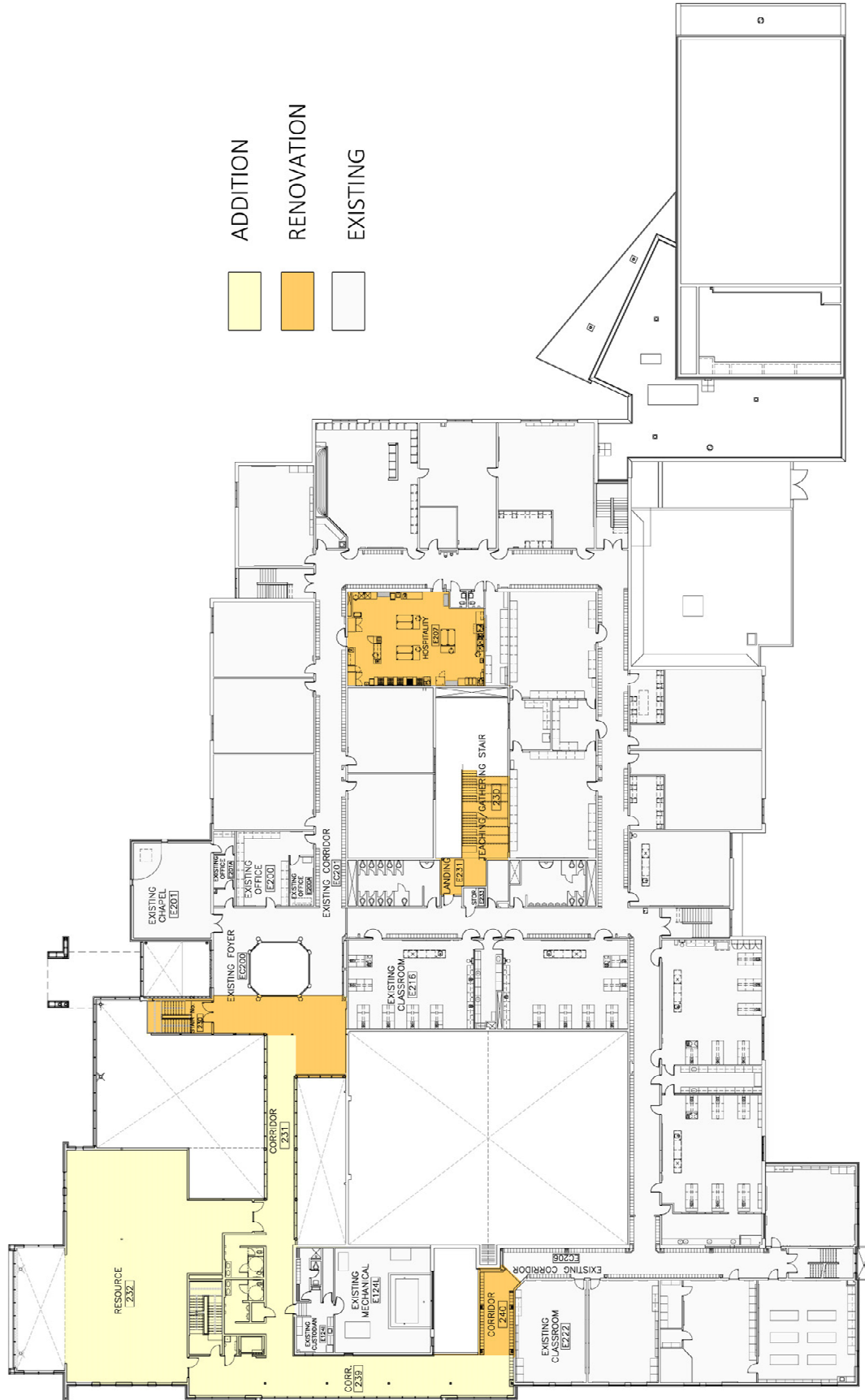
On the third floor four (4) additional classrooms, ancillary spaces including washrooms and elevator are provided, making the 3 storey school fully accessible.

## 2.0 Drawings

Drawings of the proposed new Assumption Catholic Secondary School follow. They include Site plan, Ground, Second and Third Floor Plans, and Perspectives.







ADDITION  
 RENOVATION  
 EXISTING

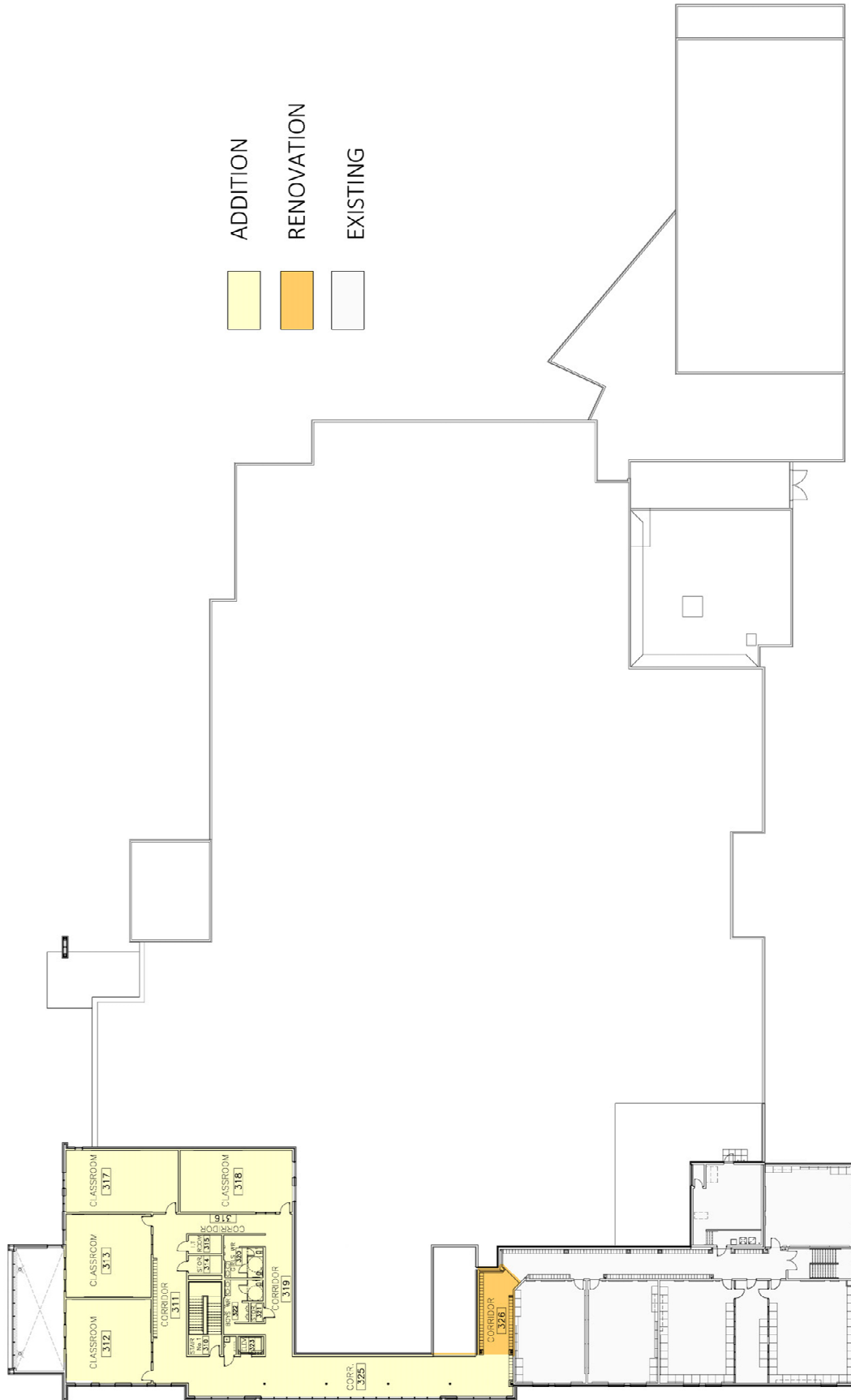
  
 SECOND FLOOR PLAN  
 1 2 3 4 5 6 7 8 9 10 11 12 13 14 15 16 17 18 19 20 21 22 23 24 25

20 September 2018

ASSUMPTION C. S. S.  
 3230 Woodward Ave., Burlington, ON

**SVEDAS** / ARCHITECTS INC.

**HALTON CATHOLIC** DISTRICT SCHOOL BOARD



ADDITION  
RENOVATION  
EXISTING

THIRD FLOOR PLAN  
0 5 10 25  
4

20 September 2018

ASSUMPTION C. S. S.  
3230 Woodward Ave., Burlington, ON

SVEDAS / ARCHITECTS INC.

HALTON CATHOLIC DISTRICT SCHOOL BOARD



Exterior View

### 3.0 Building Program

Room Number	Space Type	Pupil Loading
<b>GROUND FLOOR</b>		
E100B	Exist. Admin	0
E100D	Exist. Meeting	0
E100E	Exist. Principal	0
EC100	Exist. Foyer	0
EC101	Exist. Corridor	0
101	Resource Room	12
102/103	Classroom	21
104	Theatre/Dramatic Arts	21
105	Music Rm (Instrumental)	21
106	Technical/Vocational	21
107	Exist. Special Ed.	21
108	Art Room	21
109	Classroom	21
110	New Exercise Room	21
111	New Exercise Room	21
112	Classroom	21
113A	Existing Gymnasium	21
113B	Existing Gymnasium	21
113C	Gym Storage	0
113D	Exist. Gym Storage	0
E114	Classroom	21
115	Classroom	21
116	Classroom	21
117	Technical/Vocational	21
118	Classroom	21
119	Teaching/Gathering Stair	0
E119D	Gallery	0
119F	Student Success	0
119G	Office	0
119H	Quiet Room	0

119I	Classroom	21
120	Gymnasium	0
E124G	Exist. Custodian	0
131	Vestibule	0
133	Corridor	0
134	Hub	0
135	Cafeteria	0
136	Servery	0
136A	Kitchen	0
136	Office/Storage	0
137	Girls WR	0
139	Boys WR	0
140	Elevator	0
143	Corridor	0
144	Receiving	0
145	Social Work Room	0
146	Corridor	0

**SECOND FLOOR**

EC200	Exist. Foyer	0
E200	Exist. Office	0
E200A	Exist. Office	0
201	Chapel	0
202	Classroom	21
203	Classroom	21
204	Classroom	21
205	Classroom	21
206	Classroom	21
E206	Exist. Corridor	0
207	Hospitality Classroom	21
208	Classroom	21
209	Classroom	21
210	Classroom	21

211	Computer Room	21
212	Classroom	21
213	Computer Room	21
214	Classroom	21
215	Classroom	21
216	Science Laboratory	21
217	Science Laboratory	21
218	Science Laboratory	21
219	Science Laboratory	21
221	Classroom	21
222	Classroom	21
223	Technical/Vocational	21
224	Science Laboratory	21
225	Classroom	21
230	Teaching/Gathering Stair	0
E231	Landing	0
231	Corridor	0
232	Library Resource Centre	0

**THIRD FLOOR**

301	Classroom	21
302	Classroom	21
303	Computer Room	21
304	Computer Room	21
305	Classroom	21
310	Stair No. 1	0
311	Corridor	0
312	Classroom	21
313	Classroom	21
314	Storage	0
315	IT Room	0
316	Corridor	0
317	Classroom	21
318	Classroom	21

319	Corridor	0
320	Girls WR	0
321	Storage	0
322	Boys WR	0
323	Elevator	0
325	Corridor	0
326	Corridor	0

<b>Total</b>	<b>1041</b>
--------------	-------------

#### 4.0 Preliminary Project Information

SITE	
Site Area	2.19 ha (5.43 acres)
Building Coverage	7,011 m <sup>2</sup>
Lot Coverage	31.9 %
Designated Accessible Parking	6
Total Parking Provided (incl. overflow)	160

BUILDING	
First Floor GFA	7,011 m <sup>2</sup> (75,465 ft <sup>2</sup> )
Second Floor GFA	4,793 m <sup>2</sup> (51,591 ft <sup>2</sup> )
	1,343 m <sup>2</sup> (14,455 ft <sup>2</sup> )
Total GFA	13,147 m <sup>2</sup> (141,513 ft <sup>2</sup> )

SCHEDULE *	
Tender (sequential)	October 18, 2018
Start of Construction	November 30, 2018
Occupancy	September 2019

\* Note that the September 2019 occupancy date is contingent upon the 2018 Municipal Approvals Date.