

2019-20 Milton Secondary School Boundary Review

Part #1: Introduction

Virtual Public Information Meeting Portals

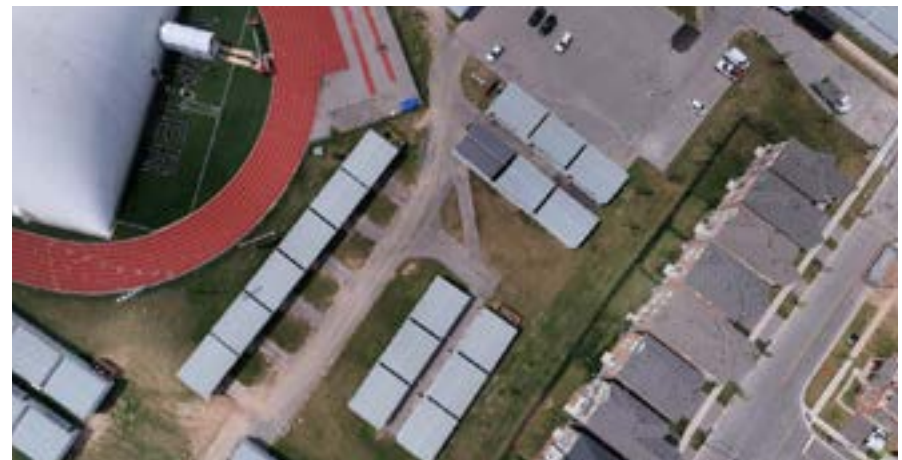
What is a School Boundary Review Process?

- A process to create and/or change school attendance boundaries. These are geographic areas that define a school's service area where it will draw its students.
- Creation of school attendance areas/boundaries are based on a Criteria approach. There are six (6) in total, and are as follows:
 1. Optimizing the use of existing school facilities;
 2. Minimizing the use of portable classrooms whenever possible;
 3. To the extent possible, minimize school boundary adjustments over the long-term;
 4. Optimize school transportation and maximizing walkers to school;
 5. Ensure that classroom organizations are sustainably sized; and,
 6. Give due consideration to the concept of a neighbourhood and Catholic School community.

PORTAL #3 PROVIDES A DETAILED EXPLANATION OF EACH CRITERIA.

Why is a School Boundary Review Needed in Milton?

- The Board requires a new secondary school, as both secondary schools in Milton have surpassed their built capacity, and are nearing their maximum site capacity.
- Staff expects a response from the Ministry in Spring 2020 to confirm whether it will receive funding for the project as part of the 2019-20 Capital Priorities Program.
- There is inadequate space in the two (2) existing secondary schools in the Town of Milton to accommodate growth in wait for the new Milton #3 CSS to open in 2022, therefore an interim solution is required.



PORTAL #2 PROVIDES A DETAILED EXPLANATION OF ENROLMENT PRESSURES & PROJECTIONS

Goals of the School Boundary Review Needed in Milton?

- A School Boundary Review Process is needed to:
 1. Create the ultimate school boundary for the future Milton #3 CSS school community
 2. Create an interim accommodation plan for Secondary Students in Milton for the 2021 school year until Milton #3 CSS opens



Who Participates in the Process?

- The School Boundary Review Committee (SBRC) includes the following membership:
 1. Catholic School Council Chairs (or designates) of each all school communities in Milton;
 2. Secondary School Council Chairs (or designates) of both secondary schools in Milton;
 3. Designated Family of Schools Superintendents of Milton; and,
 4. Facility Management Services and Planning Services Staff.
- The task of the SBRC is to review potential options and provide objective feedback.
- Once preferred options are identified by the Committee, they are presented to the affected school communities (the public) to gather feedback.
- Once a preferred recommended option is selected, Senior Staff will present the recommended accommodation to Trustees for consideration and approval.

Catholic School Council Representatives/Designates

Pat Grison (BHRD)	Jessica Macias (PETE)	Michelle Bazinet (LUMN)
Naghmeh Razmpoosh (BHRD)	Mae Protacio (PETE)	Adaeze Nwosu (LUMN)
Ann-Marie Vis (HLRM)	Marc Le Brun (PETE)	John Babos (OLFA)
Sandra Alva (HLRM)	Nikki Rang (JEAN)	William Bressette (QUEN)
Mark Billy (OLVM)	Jennifer Botelho (JEAN)	Katarina Busija (QUEN)
Melanie Price (OLVM)	Dan Folia (JEAN)	Enrique Boggio (BENE)
Francine Countryman (ANTH)	Trish Vergata (JEAN)	Bryan DeSousa (BENE)
Tanya Reis (ANTH)	Jennifer Santos (GUAR)	Lisa Paulo-Alberto (SCHO)
	Natalie Russell (GUAR)	Natalia Gorska-Anderson (SCHO)

Secondary School Student Representatives

Gurtaj Malhi (JEAN)	Nathan Rodrigues (BHRD)
Zaina Qasim (JEAN)	Laura Greenway (BHRD)

Board Staff

Jeff Crowell	Superintendent of Education
Lorrie Naar	Superintendent of Education
Ryan Merrick	Superintendent, Facility Management Services
Donna Sayers	Administrative Assistant, Facility Management Services
Frederick Thibeault	Senior Manager, Planning Services
Dhilan Gunasekara	Planning Officer, Planning Services

NOTE: If you want to reach an SBRC member from your school community, make sure to submit your questions via the **Questions Portal**

Virtual Public Information Meeting Format

- Virtual open house video format
- Self directed exploration of different information portals
- On-line Feedback and FAQ forum to submit feedback and questions
- Staff available to answer questions via website and FAQs



A screenshot of the 'SCHOOL PLANNING' website. The header is teal with the text 'SCHOOL PLANNING' and a small logo. Below the header is a navigation menu with links: Home, About, Boundary Reviews, Long Term Planning, Projects & Partnerships, Calendar, and Contact Us. The main content area is titled 'P1 - Introduction: School Boundary Review Process'. Underneath, there is a section for 'Key Messages & Takeaways' with a paragraph of introductory text and a numbered list of two points. To the right of the text is a video player showing a map and data. At the bottom of the video player is a blue button that says 'Click Here For Presentation'.

Information Portals

The following portals are available for review in order to inform you on the SBRC current preferred solutions. This will provide you with the necessary background information to provide your feedback:

1. Introduction (P1 - Current)
2. Facilities & Enrolment Information (P2)
3. Boundary Review Criteria (P3)
4. Preferred Ultimate School Boundaries (P4)
5. Potential Interim Accommodation Plans (P5)
 - *Increased Capacity (P5.1)*
 - *HCDSB Holding School (P5.2)*
 - *Other Holding Schools (P5.3 to 5.4)*
6. Next Steps (P6)



Schedule of the School Boundary Review Process:

	Meeting	Date	Location
1.	SBRC Working Meeting #1-3	February - March	JEAN/BHRD
2.	SBRC Working Meeting #4	April 20, 2020	Virtual
3.	Virtual Public Meeting #1	April 24, 2020	Virtual
4.	Launch of Survey	April 24, 2020	Online
5.	Close Survey	May 4, 2020	Online
6.	SBRC Working Meeting #5	May 13, 2020	Virtual
7.	Virtual Public Meeting #2	May 20, 2020	Virtual
8.	Launch of Survey	May 20, 2020	Online
9.	Close Survey	June 1, 2020	Online
10.	SBRC Working Meeting #6	June 11, 2020	Virtual
11.	Action Report	June to Early Oct 2020	TBD

Next Portal:

P2- Facilities & Enrolment Information