



2

Halton Region



ST. SCHOLASTICA
CATHOLIC ELEMENTARY SCHOOL



2.1

Regional Overview

Regional Overview and Census

Halton Region is located within the Greater Golden Horseshoe region of Ontario, comprising of four municipalities, City of Burlington, Town of Halton Hills, Town of Milton, and Town of Oakville. Halton is projected to continue increasing in population, largely due to new residential development and intensification of existing urban areas. Migration from within Canada as well as new immigrants entering Canada also contribute to the growing student population at the HCDSB. The Board will need to ensure that Catholic student accommodation is adequately provided for existing students and families as well as future students.

According to Statistics Canada, Halton’s overall population has increased from 501,674 in 2011 to 596,637 in 2021, an increase of about 19%. However, not all municipalities grew at the same pace over this ten-year period – Milton grew by 58%, compared to 17% in Oakville, which had the second highest population growth in Halton. Due to this, the share of each municipality’s population as a percentage of the Region’s population has also changed. Oakville, Burlington and Halton Hills have seen declines in their share by 1% to 4%, while Milton’s share has increased by 5%.

The changes in population over the same 10 years have been reflected in the Board’s student population. The Board’s total enrolment, excluding the Adult Learning Centre, has increased from 30,062 students in 2011 to 36,036 students in 2021, an increase of 20%. The largest increase in student population occurred in Milton schools, where student enrolment more than doubled.

10-Year Population

Total Census Population Change

↑ 19%

HCDSB Enrolment Change

↑ 20%

Municipal Distribution of Census Population

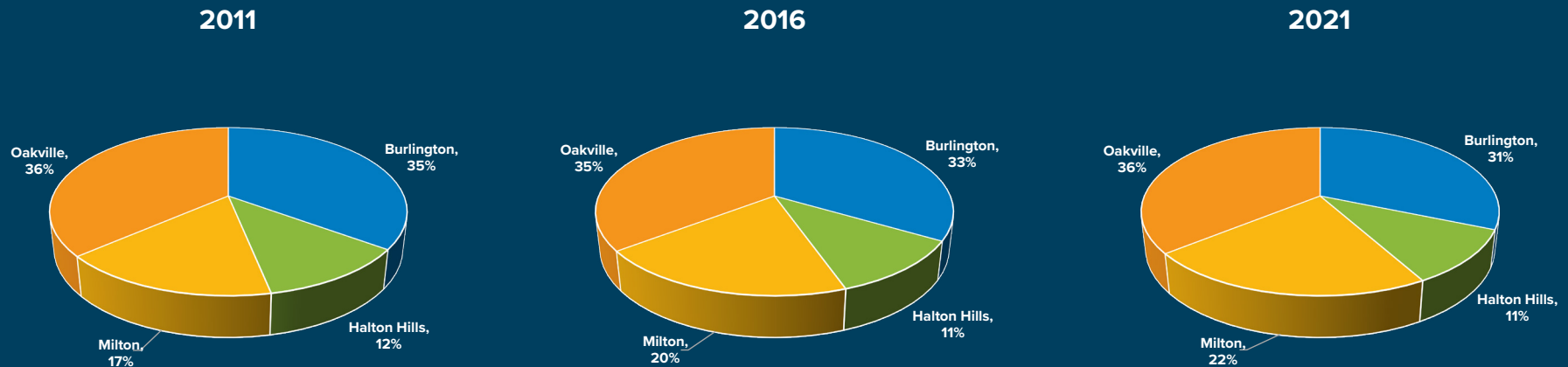


Image on previous page: St. Scholastica CES (Opened 2018).

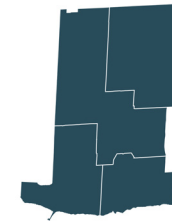
Regional Enrolment Trends

To accommodate the growth in student population since 2011, the Board opened 1 elementary school in Burlington; 4 elementary schools and 2 secondary schools in Milton; and 3 elementary schools and 1 secondary school in Oakville. The total enrolment of the Board for the elementary and secondary school panels are projected to continue growing overall. Over time, the Board will be required to increase its overall capacity in the growing areas with the introduction of new schools, and construction of permanent classroom additions. Alternatively, the Board will also be required to reduce its overall capacity in areas of decline to ensure schools remain viable over time. As such, the Board consolidated 4 elementary schools into 2 schools in Oakville since 2011.

The projection period for the Long-Term Capital Plan (LTCP) is over 15 years, between the 2022-2037 school years. During this time, the Board anticipates the following:

- Within a 15-year period, the Board's **elementary panel enrolment is projected to increase** from 22,450 students to 34,227 students, an increase of approximately 52%.
- Within a 15-year period, the Board's **secondary panel enrolment is projected to increase** from 13,308 students to 18,354 students, an increase of approximately 38%.

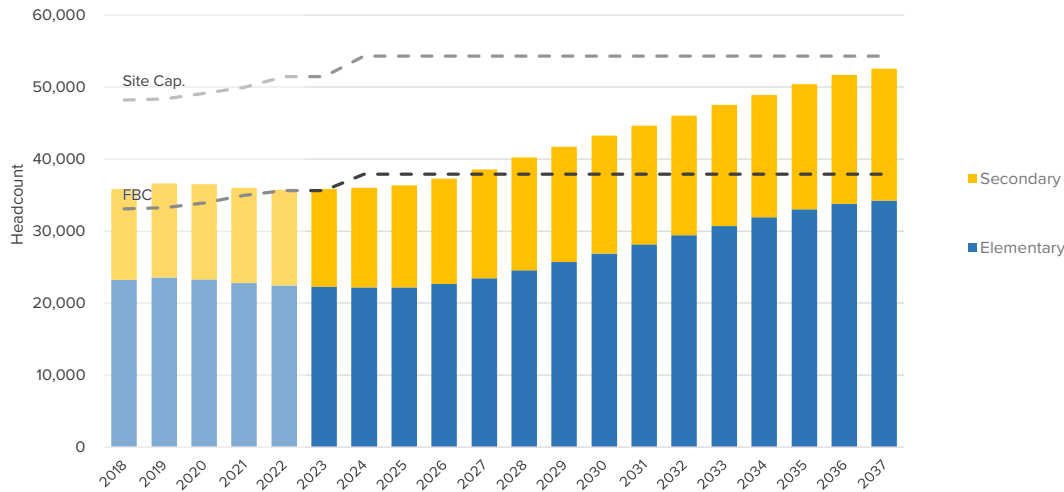
Projected 15-Year Change in Enrolment



Halton Region
Total

↑ 47%

Enrolment Projections and Facility Utilization



How to read enrolment projection graphs

This graph depicts the total historical and projected population in HCDSB schools by elementary (Junior Kindergarten-Grade 8) and secondary panel (Grade 9-12). Thomas Merton Adult Learning Centre is excluded. Historical population is provided in a lighter colour than projected population. The Total FBC line is the sum of all of the Functional Building Capacity (FBC) from the Board's schools; and the Total Site Cap. line is the Total Site Capacity of the Board, which is the sum of the Board's FBC and portable capacity from each of the Board's school sites. Over time, FBC and Total Site Cap. can change due to construction of new schools, additions, demolitions, rebuilds and school consolidations/closures.

How to read enrolment projection and facility utilization tables

This table shows the total historic and projected enrolment for the Board's elementary and secondary panel. Where enrolment exceeds Total Site Capacity (sum of Functional Building Capacity and total portable capacity on site), the enrolment value is bolded in dark red. Facility utilization is a calculation derived by dividing enrolment from the total Functional Building Capacity (FBC). Where facility utilization is less than 60%, the utilization value is highlighted in a light red colour.

Note that FBC and Total Site Cap. in past and future years may be different from the currently stated value due to school consolidations/closures, school additions, or future projects that are currently approved for funding by the Ministry of Education but have yet to be completed.

School	FBC	Port. Cap.	Site Cap.		Historic					Short-Term Projected (1-5 year)					Long-Term Projected (6-15 year)							15-year Change			
					2018	2019	2020	2021	2022	2023	2024	2025	2026	2027	2028	2029	2030	2031	2032	2033	2034		2035	2036	2037
Elementary Total	22,418	10,304	32,722	Enrol. UTZ	23,212 104%	23,573 105%	23,289 104%	22,790 102%	22,450 100%	22,281 99%	22,156 93%	22,183 93%	22,666 95%	23,446 99%	24,569 103%	25,718 108%	26,898 113%	28,159 119%	29,433 124%	30,721 129%	31,902 134%	32,997 139%	33,770 142%	34,227 144%	52%
Secondary Total	13,188	5,548	18,736	Enrol. UTZ	12,619 118%	13,030 120%	13,190 115%	13,246 106%	13,308 101%	13,576 103%	13,836 98%	14,178 100%	14,600 103%	15,084 107%	15,644 111%	15,987 113%	16,385 116%	16,458 116%	16,596 117%	16,801 119%	16,997 120%	17,411 123%	17,898 127%	18,354 130%	38%
Region of Halton Total	35,606	15,852	51,458	Enrol. UTZ	35,831 108%	36,603 110%	36,479 108%	36,036 103%	35,758 100%	35,857 101%	35,992 95%	36,361 96%	37,266 98%	38,530 102%	40,213 106%	41,705 110%	43,283 114%	44,617 118%	46,029 121%	47,522 125%	48,899 129%	50,408 133%	51,668 136%	52,581 139%	47%

2.2

Development and Growth

Growth in Halton

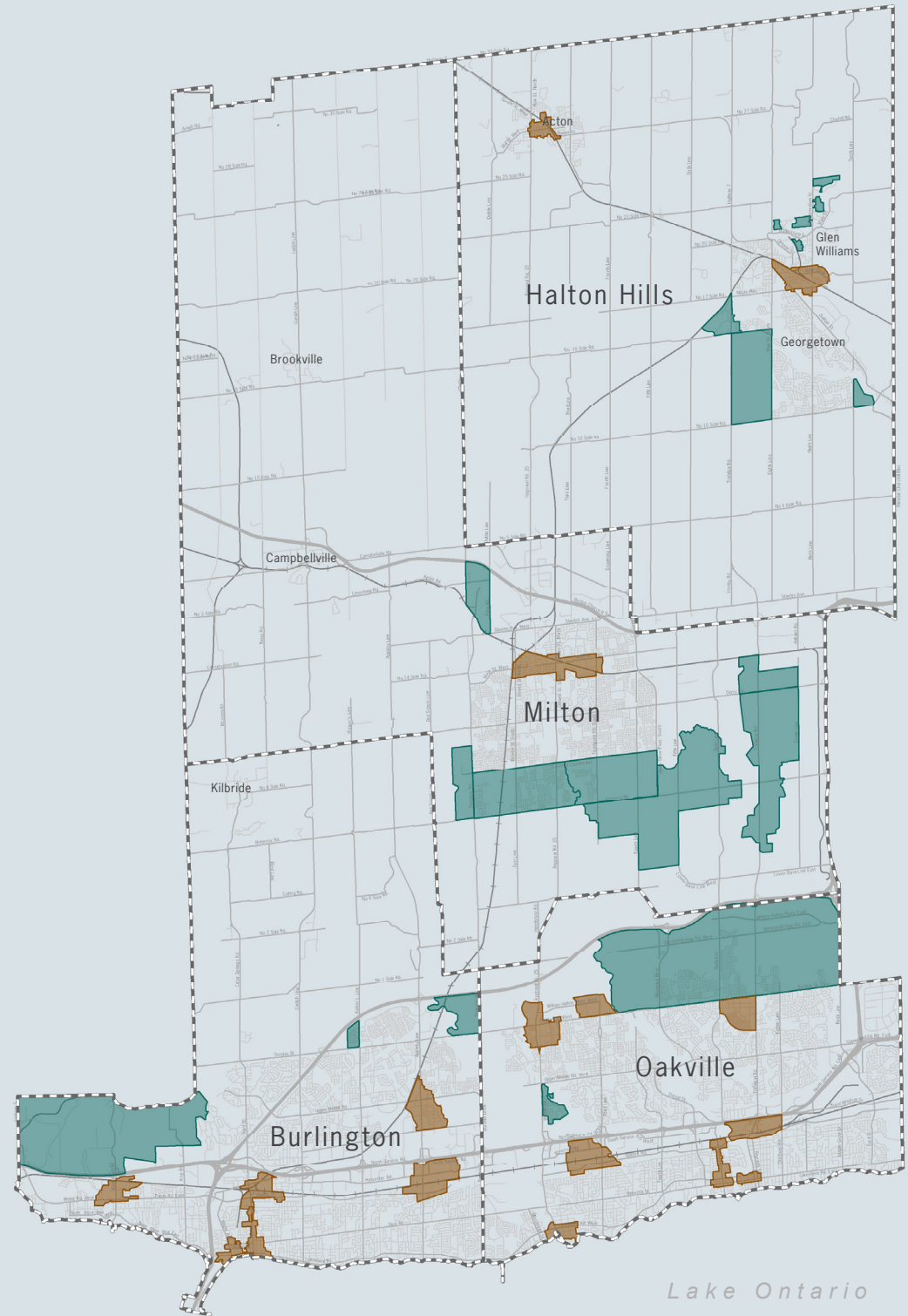
Through Ontario's Places to Grow initiative in 2005, regional growth plans were developed to guide long-term land use policies. The first growth plan, Growth Plan for the Greater Golden Horseshoe, took effect in 2006. This plan established a long-term framework for the growth of the region. The provincial government replaced the 2006 Growth Plan with new Growth Plans over the years. The current 2020 Growth Plan for the Greater Golden Horseshoe took effect on August 28, 2020. Overall, the Greater Golden Horseshoe region is forecast to grow to 14.9 million people by 2051 - of this, Halton is forecasted to grow to 1.1 million by 2051.

Halton continues to have large areas for greenfield development remaining. Most of these lands are within the Town of Milton. Remaining development will take the form of intensification within the existing urban areas - these include the Major Transit Station Areas and Urban Growth Areas within all municipalities in Halton. Additional information regarding these developments is provided within the respective municipal sections on this plan. Maps showing the location of large-scale development (e.g., secondary plans, proposed secondary plans and development areas and growth centres) are provided in the following pages.





Image: St. Thomas Aquinas CSS (Opened 2011).

Development Areas Overview



Legend

-  Greenfield
-  Intensification

Development in the City of Burlington

Greenfield

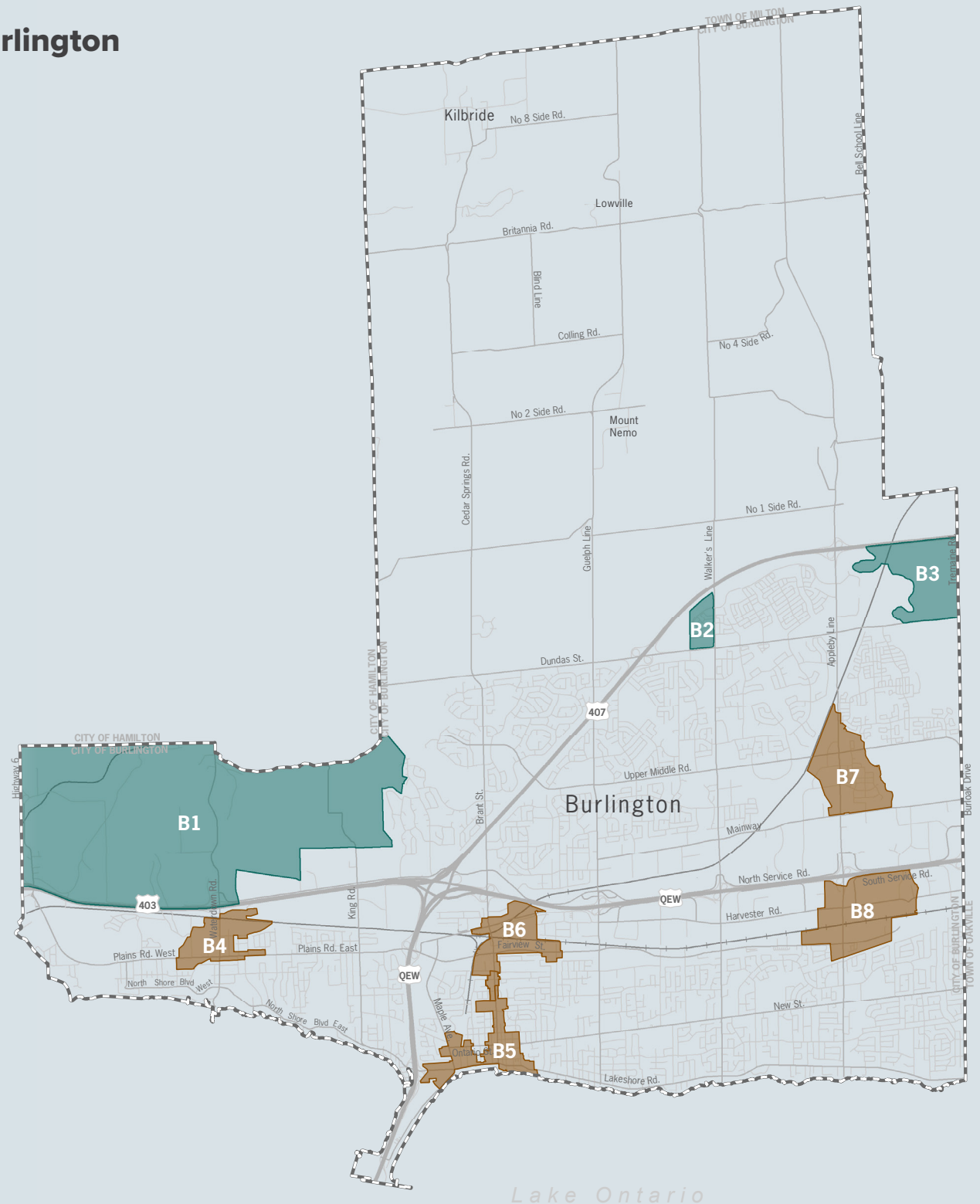
- B1** North Aldershot
- B2** Alton Village West (Sundial Homes)
- B3** Evergreen Community

Intensification

- B4** Aldershot Corners (Aldershot GO MTSA)
- B5** Downtown Urban Centre
- B6** Burlington Junction (Burlington GO MTSA)
- B7** Uptown Urban Centre
- B8** Appleby Gateway (Appleby GO MTSA)

Legend

- Greenfield
- Intensification



Development in the Town of Halton Hills

Greenfield

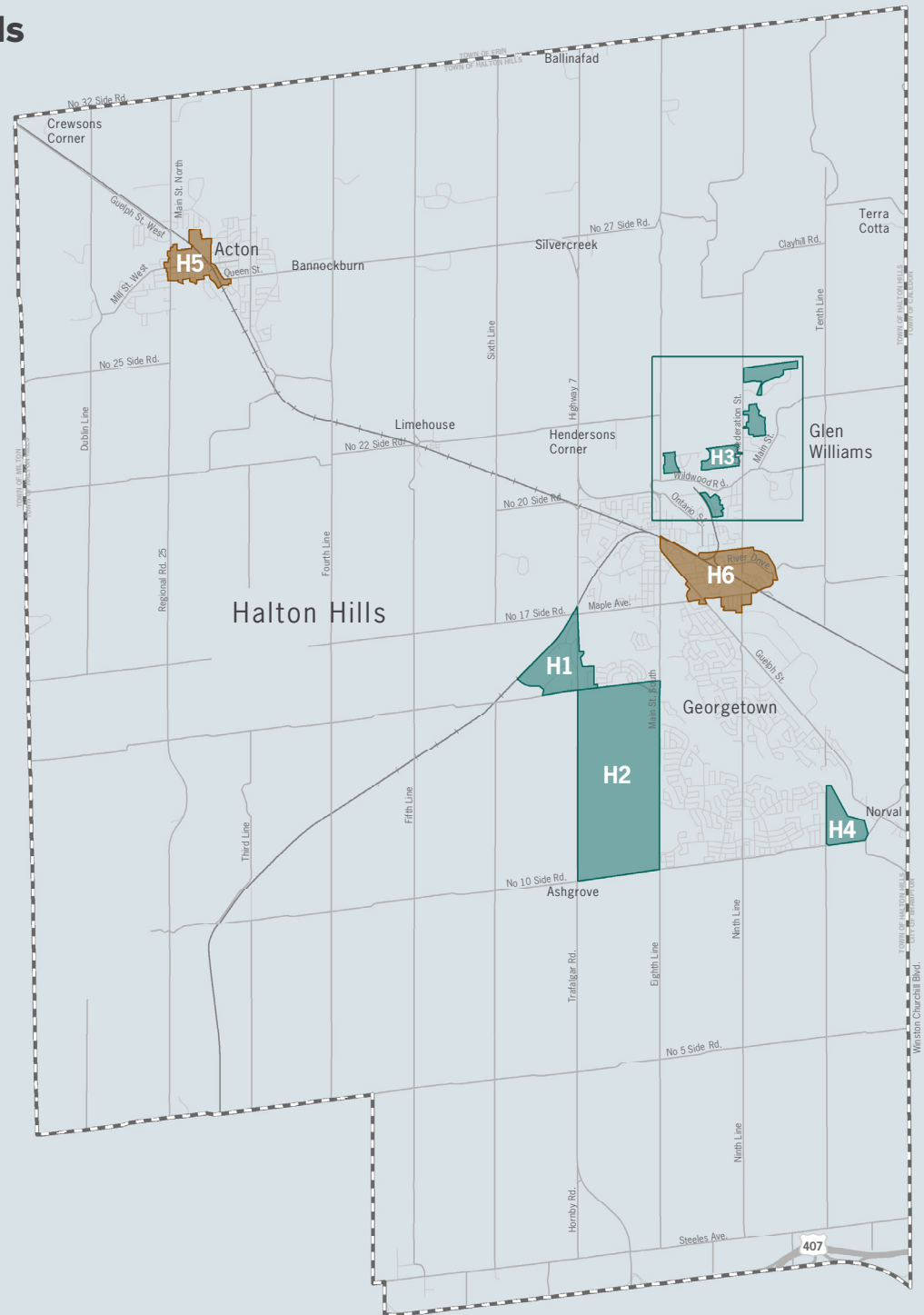
- H1** Stewarttown
- H2** Vision Georgetown
- H3** Glen Williams New Planned Areas
- H4** Southeast Georgetown

Intensification

- H5** Acton GO MTSA
- H6** Georgetown GO/Mill Street Corridor (Georgetown GO MTSA)

Legend

- Greenfield
- Intensification



Development in the Town of Milton

Greenfield

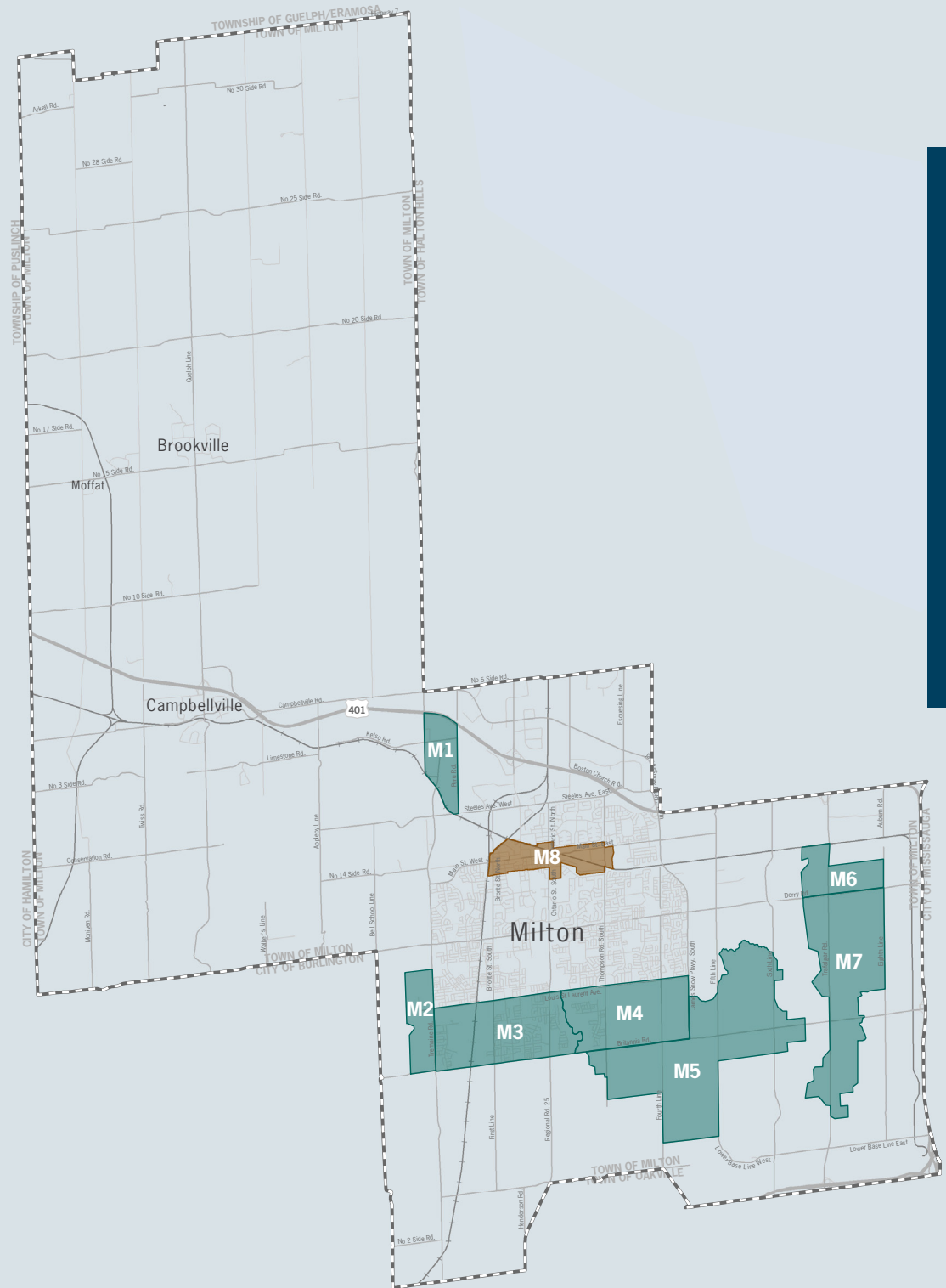
- M1** Milton Heights
- M2** Milton Education Village
- M3** Boyne West (part of Boyne Secondary Plan)
- M4** Boyne East (part of Boyne Secondary Plan)
- M5** Britannia
- M6** Agerton
- M7** Trafalgar

Intensification

- M8** Central Business District (Downtown Milton UGC & Milton GO MTSA)

Legend

- Greenfield
- Intensification



Development in the Town of Oakville

Greenfield

- 01 Bronte Green (Glen Abbey Encore)
- 02 North Oakville

Intensification

- 03 Palermo Village
- 04 Hospital District
- 05 Uptown Core
- 06 Bronte Village
- 07 Bronte GO MTSA
- 08 Kerr Village
- 09 Downtown Oakville
- 010 Midtown Oakville

Legend

- Greenfield
- Intensification

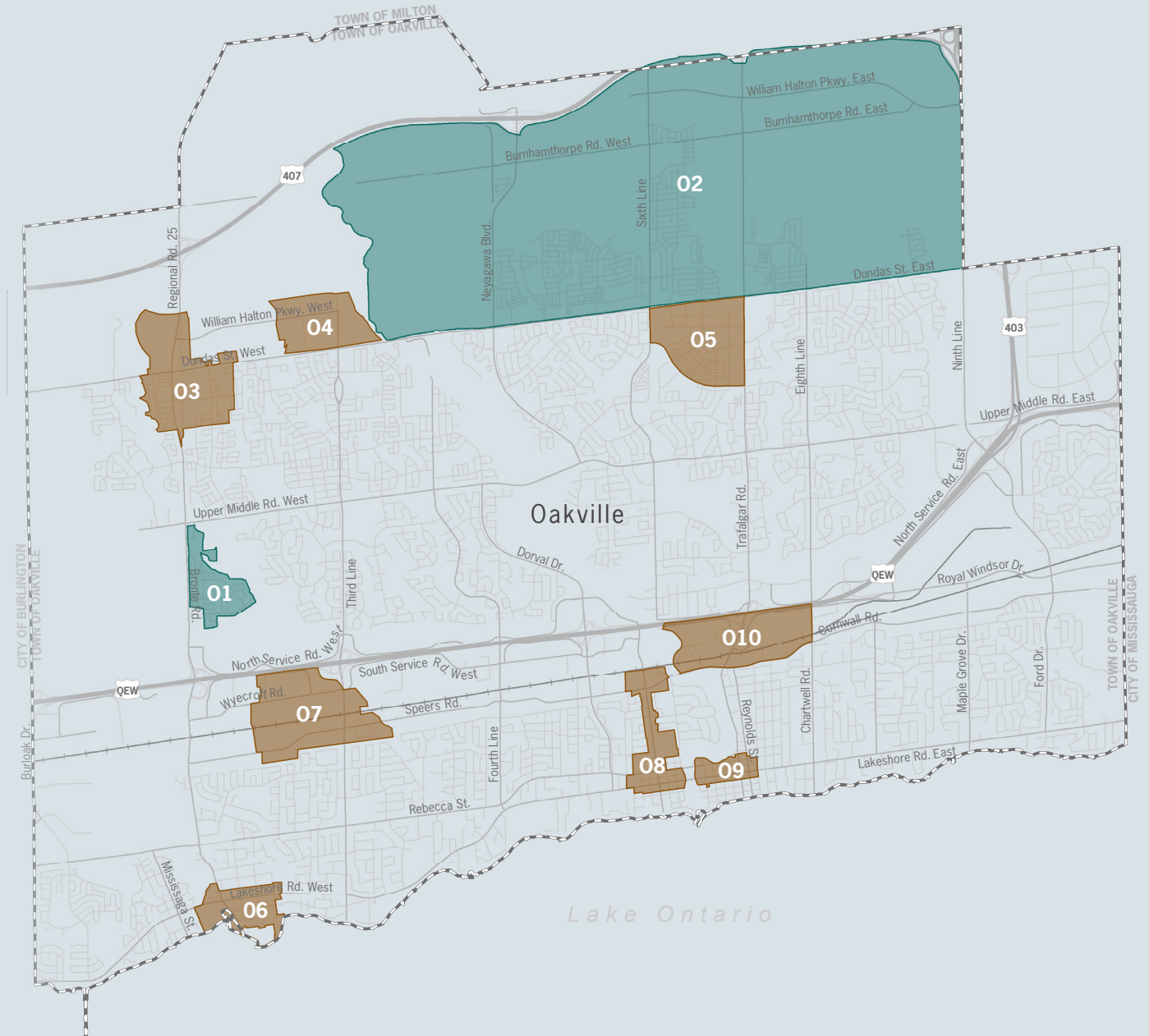


Image on next page:
Corpus Christi CSS (Opened 2008).



CORPUS CHRISTI CATHOLIC SECONDARY SCHOOL

5150

15

